

## Frozen Jr. Callback Sides

**Congratulations**, you have been invited to attend Callbacks! Please consider looking over these sides to better prepare for the audition process (A “side” is a short excerpt from one of the scenes in the play). Know that reading for a particular character does NOT necessarily indicate that you are being considered for that part. Notice every side below has (characters represented), this means that those characters have similar characteristics to those on the side. Therefore, if you don’t see a side for the character you are hoping to read for, don’t worry they are represented in the sides below.

Characters	Side Page(s)	Tips												
<p><b>Young Elsa, Young Anna, Queen Iduna, King Agnarr</b></p> <table border="1" style="width: 100%;"> <tr> <td><b>Characteristics Represented-</b></td> </tr> <tr> <td>Townspeople, Snow Chorus</td> </tr> <tr> <td>Castle Staff</td> </tr> </table>	<b>Characteristics Represented-</b>	Townspeople, Snow Chorus	Castle Staff	Pg 9	<table border="1" style="width: 100%;"> <tr> <td>Young Elsa</td> <td>'Big sister', obedient, indulges her sister's wishes</td> </tr> <tr> <td>Young Anna</td> <td>Excited, high energy, innocent</td> </tr> <tr> <td>Queen/King</td> <td>Parental voice, stern but loving</td> </tr> </table>	Young Elsa	'Big sister', obedient, indulges her sister's wishes	Young Anna	Excited, high energy, innocent	Queen/King	Parental voice, stern but loving			
<b>Characteristics Represented-</b>														
Townspeople, Snow Chorus														
Castle Staff														
Young Elsa	'Big sister', obedient, indulges her sister's wishes													
Young Anna	Excited, high energy, innocent													
Queen/King	Parental voice, stern but loving													
<p><b>Pabbie, Bulda, Queen, King</b></p> <table border="1" style="width: 100%;"> <tr> <td><b>Characteristics Represented-</b></td> </tr> <tr> <td>Hidden Folk, Townspeople</td> </tr> <tr> <td>Weselton, Castle Staff, Bishop</td> </tr> </table>	<b>Characteristics Represented-</b>	Hidden Folk, Townspeople	Weselton, Castle Staff, Bishop	Pg 16(top)-18	<table border="1" style="width: 100%;"> <tr> <td>Queen Iduna</td> <td>Concerned, firm, not panicked, realist</td> </tr> <tr> <td>King Agnarr</td> <td>Holding back his panic, controlled and firm</td> </tr> <tr> <td>Pabbie</td> <td>Kind-hearted, a bit funny but not silly, desires to help</td> </tr> <tr> <td>Bulda</td> <td>'Doctor-like', talks like an old wiseman</td> </tr> </table>	Queen Iduna	Concerned, firm, not panicked, realist	King Agnarr	Holding back his panic, controlled and firm	Pabbie	Kind-hearted, a bit funny but not silly, desires to help	Bulda	'Doctor-like', talks like an old wiseman	
<b>Characteristics Represented-</b>														
Hidden Folk, Townspeople														
Weselton, Castle Staff, Bishop														
Queen Iduna	Concerned, firm, not panicked, realist													
King Agnarr	Holding back his panic, controlled and firm													
Pabbie	Kind-hearted, a bit funny but not silly, desires to help													
Bulda	'Doctor-like', talks like an old wiseman													

Characters	Side Page(s)	Tips															
<p><b>Anna, Elsa, Weselton</b></p> <table border="1" data-bbox="205 269 751 516"> <tr> <td><b>Characteristics Represented-</b></td> </tr> <tr> <td><b>Bishop, Butler, Castlestaff</b></td> </tr> <tr> <td><b>King Agnarr</b></td> </tr> <tr> <td> </td> </tr> </table>	<b>Characteristics Represented-</b>	<b>Bishop, Butler, Castlestaff</b>	<b>King Agnarr</b>		Pg 46-47	<table border="1" data-bbox="1352 232 1623 505"> <tr> <td>Anna</td> <td>Excited, innocent, flaky</td> </tr> <tr> <td>Elsa</td> <td>Big sister kindness and protector</td> </tr> <tr> <td>Weselton</td> <td>Stuffy, dry, over-the-top snob</td> </tr> </table>	Anna	Excited, innocent, flaky	Elsa	Big sister kindness and protector	Weselton	Stuffy, dry, over-the-top snob	<table border="1" data-bbox="1623 232 1906 505"> <tr> <td> </td> <td> </td> </tr> <tr> <td> </td> <td> </td> </tr> </table>				
<b>Characteristics Represented-</b>																	
<b>Bishop, Butler, Castlestaff</b>																	
<b>King Agnarr</b>																	
Anna	Excited, innocent, flaky																
Elsa	Big sister kindness and protector																
Weselton	Stuffy, dry, over-the-top snob																
<p><b>Anna, Hans</b></p> <table border="1" data-bbox="205 618 751 808"> <tr> <td><b>Characteristics Represented-</b></td> </tr> <tr> <td><b>Weselton, Pabbie, Castle Staff, Bishop</b></td> </tr> <tr> <td><b>Bishop, King Agnarr, Oaken, Olaf</b></td> </tr> </table>	<b>Characteristics Represented-</b>	<b>Weselton, Pabbie, Castle Staff, Bishop</b>	<b>Bishop, King Agnarr, Oaken, Olaf</b>	Pg 48- (top) 49	<table border="1" data-bbox="1352 581 1623 854"> <tr> <td>Anna</td> <td>Innocent, sweet, flirtatious, over-reactive</td> </tr> <tr> <td>Hans</td> <td>Overly interested, slimy syrupy, flirtations with ill intentions</td> </tr> </table>	Anna	Innocent, sweet, flirtatious, over-reactive	Hans	Overly interested, slimy syrupy, flirtations with ill intentions	<table border="1" data-bbox="1623 581 1906 854"> <tr> <td> </td> <td> </td> </tr> <tr> <td> </td> <td> </td> </tr> </table>							
<b>Characteristics Represented-</b>																	
<b>Weselton, Pabbie, Castle Staff, Bishop</b>																	
<b>Bishop, King Agnarr, Oaken, Olaf</b>																	
Anna	Innocent, sweet, flirtatious, over-reactive																
Hans	Overly interested, slimy syrupy, flirtations with ill intentions																
<p><b>Anna, Olaf</b></p> <table border="1" data-bbox="205 1166 751 1356"> <tr> <td><b>Characteristics Represented-</b></td> </tr> <tr> <td><b>Bulda, Oaken, Sven</b></td> </tr> <tr> <td><b>Townsppeople, Hidden Folk, Castle Staff</b></td> </tr> </table>	<b>Characteristics Represented-</b>	<b>Bulda, Oaken, Sven</b>	<b>Townsppeople, Hidden Folk, Castle Staff</b>	Pg 63(bottom)-64- auditioners read for Kristoff here	<table border="1" data-bbox="1352 1128 1623 1291"> <tr> <td>Anna</td> <td>Surprised, determined, on a mission, kind, remembering</td> </tr> </table>	Anna	Surprised, determined, on a mission, kind, remembering	<table border="1" data-bbox="1623 1291 1906 1453"> <tr> <td>Olaf</td> <td>Very dramatically cheerful, silly, childlike innocent, comical</td> </tr> </table>	Olaf	Very dramatically cheerful, silly, childlike innocent, comical							
<b>Characteristics Represented-</b>																	
<b>Bulda, Oaken, Sven</b>																	
<b>Townsppeople, Hidden Folk, Castle Staff</b>																	
Anna	Surprised, determined, on a mission, kind, remembering																
Olaf	Very dramatically cheerful, silly, childlike innocent, comical																

Characters	Side Page(s)	Tips											
<p><b>Anna, Elsa</b></p> <table border="1" data-bbox="205 269 751 456"> <tr> <td><b>Characteristics Represented-</b></td> </tr> <tr> <td>Bulda, Pabbie, Queen Iduna, Castle Staff</td> </tr> <tr> <td>Oaken, Townspeople</td> </tr> </table>	<b>Characteristics Represented-</b>	Bulda, Pabbie, Queen Iduna, Castle Staff	Oaken, Townspeople	Pg 90 (after Sven/Olaf lines)-91	<table border="1" data-bbox="1352 232 1625 526"> <tr> <td>Anna</td> <td>Apprehensive, nervous, amazed, excited, new found strength</td> </tr> <tr> <td>Elsa</td> <td>Apprehensive, stern, desperate to protect, 'big sister'</td> </tr> </table>	Anna	Apprehensive, nervous, amazed, excited, new found strength	Elsa	Apprehensive, stern, desperate to protect, 'big sister'				
<b>Characteristics Represented-</b>													
Bulda, Pabbie, Queen Iduna, Castle Staff													
Oaken, Townspeople													
Anna	Apprehensive, nervous, amazed, excited, new found strength												
Elsa	Apprehensive, stern, desperate to protect, 'big sister'												
<p><b>Kristoff, Pabbie, Bulda</b></p> <table border="1" data-bbox="205 630 751 906"> <tr> <td><b>Characteristics Represented-</b></td> </tr> <tr> <td>Weselton, Castle Staff, Townspeople</td> </tr> <tr> <td>Bishop, Hans, King Agnarr, Oaken, Olaf, Sven</td> </tr> <tr> <td></td> </tr> </table>	<b>Characteristics Represented-</b>	Weselton, Castle Staff, Townspeople	Bishop, Hans, King Agnarr, Oaken, Olaf, Sven		Pg 105-(middle) 106	<table border="1" data-bbox="1352 589 1625 889"> <tr> <td>Kristoff</td> <td>Realizes he cares for Anna, desperate, worried, unselfish</td> </tr> <tr> <td>Pabbie</td> <td>Worried, frustrated, quick thinking,</td> </tr> <tr> <td>Bulda</td> <td>Wise, calm, assertive</td> </tr> </table>	Kristoff	Realizes he cares for Anna, desperate, worried, unselfish	Pabbie	Worried, frustrated, quick thinking,	Bulda	Wise, calm, assertive	
<b>Characteristics Represented-</b>													
Weselton, Castle Staff, Townspeople													
Bishop, Hans, King Agnarr, Oaken, Olaf, Sven													
Kristoff	Realizes he cares for Anna, desperate, worried, unselfish												
Pabbie	Worried, frustrated, quick thinking,												
Bulda	Wise, calm, assertive												
<p><b>Kristoff, Sven, Hans, Anna</b></p> <table border="1" data-bbox="205 1154 751 1401"> <tr> <td><b>Characteristics Represented-</b></td> </tr> <tr> <td>Weselton, Bishop</td> </tr> <tr> <td>Hidden Folk, Castle Staff</td> </tr> <tr> <td>Guards</td> </tr> </table>	<b>Characteristics Represented-</b>	Weselton, Bishop	Hidden Folk, Castle Staff	Guards	Pg 108- (middle) 109	<table border="1" data-bbox="1352 1117 1625 1450"> <tr> <td>Kristoff</td> <td>Sarcastic, acts tough but soft spot for Anna.</td> </tr> <tr> <td>Sven</td> <td>Good comedic timing, Physical acting skills, Show a bond with Kristoff in an animal 'best friend' way.</td> </tr> </table>	Kristoff	Sarcastic, acts tough but soft spot for Anna.	Sven	Good comedic timing, Physical acting skills, Show a bond with Kristoff in an animal 'best friend' way.			
<b>Characteristics Represented-</b>													
Weselton, Bishop													
Hidden Folk, Castle Staff													
Guards													
Kristoff	Sarcastic, acts tough but soft spot for Anna.												
Sven	Good comedic timing, Physical acting skills, Show a bond with Kristoff in an animal 'best friend' way.												

Characters	Side Page(s)	Tips	
		Hans	Charming, slimy, shows true character here
		Anna	Kind, overly trusting

**SCENE 2: CASTLE INTERIOR**

*(Evening. KING AGNARR and QUEEN IDUNA bid their girls goodnight.)*

**QUEEN IDUNA**

All right, my loves. Time for bed.

**KING AGNARR**

And that means actually sleeping, okay? No magic.

**YOUNG ANNA**

I love sleeping. Goodnight!

**YOUNG ELSA**

Goodnight!

*(KING AGNARR and QUEEN IDUNA exit. #3 – **ELSA AND ANNA.**)*

**YOUNG ANNA**

They're gone! It's just us! Snowman. Snowman. Snowman!!!

**YOUNG ELSA**

We're supposed to be sleeping—

**YOUNG ANNA**

But the sky's awake, so I'm awake, so we have to play!

**YOUNG ELSA**

Okay. Okay.

*(YOUNG ELSA gets a toy box.)*

You know, there's a recipe to making a proper snowman.

**YOUNG ANNA**

Really?

**YOUNG ELSA**

Uh-huh.

*(YOUNG ELSA and YOUNG ANNA start to build a magical snowman from the objects in their toy box.  
#4 – **A LITTLE BIT OF YOU.**)*

(KING AGNARR touches YOUNG ANNA's forehead.)

**KING AGNARR**

Her skin is ice.

**QUEEN IDUNA**

We need the Hidden Folk of the mountains. They have healing powers!

**KING AGNARR**

Yes, the Hidden Folk! Call out for them quickly!

(QUEEN IDUNA calls out. #5 – **FIRST JOIK.**)

# First Joik

1 **QUEEN IDUNA:**

*mp* Key dah bo-wah

4 (HIDDEN FOLK appear.)

tah. *f* vo-ya vo-ya vo-ya —

**PABBIE, BULDA, HIDDEN FOLK:**

Key dah bo-wah *f* vo-ya vo-ya vo-ya —

6

hül - - - dra.

hül - - - dra.

*(PABBIE and BULDA step forward.)*

**PABBIE**

A queen who knows our call?

**QUEEN IDUNA**

I'm a child of the Northern Nomads.

**BULDA**

And now you're a queen. Good for you...

**QUEEN IDUNA**

Please, our daughter is hurt.

*(PABBIE and BULDA examine YOUNG ANNA.)*

**PABBIE**

This is a magic strike.

**YOUNG ELSA**

I'm sorry. It was an accident.

**BULDA**

Born with the powers or cursed?

**KING AGNARR**

Born, and they're getting stronger.

**PABBIE**

You're lucky she did not strike her heart. A heart is not so easily changed, but a head may be persuaded.

*(PABBIE and BULDA each place a hand on YOUNG ANNA's forehead.)*

**BULDA**

We are removing all magic. Even the magic that fills her memories, to be safe.

*(#6 – MAGIC REMOVAL. PABBIE and BULDA pull the magic out, and release it into the air.)*

**PABBIE**

She will be all right.

**QUEEN IDUNA**

Thank you.

**YOUNG ELSA**

*(urgently)*

Remove my magic, too. Please.

**BULDA**

I'm sorry, Little Snow. That we cannot do. Your powers are part of you.

**YOUNG ELSA**

But I'm afraid of what I'll do!

**PABBIE**

*(to YOUNG ELSA)*

Then fear will be your enemy.

**BULDA**

Yes, your fear will cause dangerous ice and snow, beyond your control.

**KING AGNARR**

We will not let that happen. We'll protect her.

**PABBIE**

Good. We must leave you now, but we bid you well.

**BULDA**

Call on us anytime. We love children. Raised a few strays ourselves.

**QUEEN IDUNA**

Farewell, and thank you!

*(BULDA, PABBIE, and the HIDDEN FOLK exit.)*

**KING AGNARR**

*(about Young Elsa)*

She can learn to control it, I'm sure.

**QUEEN IDUNA**

*(taking off her gloves)*

Elsa, wear these gloves. See if they help you keep it inside.

*(QUEEN IDUNA slips the gloves onto YOUNG ELSA's hands, and then goes to tend to YOUNG ANNA.)*

**KING AGNARR**

We'll close the gates, limit her contact with people, and keep her powers hidden from everyone, including Anna.

**QUEEN IDUNA**

What? We can't keep them separated. They're sisters.



**ANNA**

Yeah. It's warmer than I remember as a kid. And what's that amazing smell?

*(ELSA and ANNA both close their eyes and inhale.)*

**ANNA, ELSA**

Chocolate.

*(The SISTERS laugh. A STEWARD steps forward.)*

**STEWARD**

Your Majesty, may I present the Duke of Weaseltown?

*(WESELTON steps up.)*

**WESELTON**

Weselton! The Duke of Weselton.

*(to ELSA)*

Your Majesty, as your most profitable trading partner, it's about time we met face to face. And what a wonderful face you have. With some queens, what you get is what you get. But you are a model queen.

**ELSA**

... Thank you?

**WESELTON**

Might I tempt you with my tango?

**ELSA**

Oh... um, I don't dance.

**WESELTON**

Don't worry, I'll lead you.

*(WESELTON performs a ridiculous dance move.)*

**ANNA**

*(coming to Elsa's rescue)*

What she means is she can't dance. She's terrible. I wouldn't want you to lose a toe.

**WESELTON**

I've never heard of a queen who can't dance.

**ANNA**

Well, I've heard what you get is what you get.

*(WESELTON marches off, offended.)*

**WESELTON**

*(to himself)*

There's something severely wrong with those two.

*(WESELTON joins the other TOWNSPEOPLE, who continue to admire the castle and quietly enjoy the party.)*

**ELSA**

*(to ANNA)*

Thank you.

*(imitating Weselton)*

You are a model princess.

**ANNA**

How kind of you. I take after my sister.

*(ANNA and ELSA laugh, take hands.)*

This is nice, Elsa. Us talking.

**ELSA**

Yeah, it is.

**ANNA**

Maybe we could do it more often?

**ELSA**

I'd really like that, Anna.

**ANNA**

*(a rush of joy hits her)*

And maybe... we could keep the gates open? Let life back in the castle?

**ELSA**

Wait, no. We can't.

**ANNA**

Can't we? Who's stopping us? You're the Queen; you can do whatever you want.

**ELSA**

Well, then I'm stopping us.

**ANNA**

But why? I don't understand.

**ELSA**

That's right, you don't. Can you excuse me for a minute?

*(ELSA exits.)*

**ANNA**

*(calling after her)*

Elsa?

*(ELSA ignores ANNA. ANNA stands there, alone, hurt. HANS spots her and steps up with a smile.)*

**HANS**

Hello again.

**ANNA**

Hans.

**HANS**

You look upset. Are you okay?

**ANNA**

Long story... Elsa just left me alone again. Like she did for years.

**HANS**

I'm so sorry.

**ANNA**

It's okay, I'm used to it. She stopped talking to me when we were little.

**HANS**

Why would she do that?

**ANNA**

I don't know. I could never figure out what I did.

**HANS**

I spent a lot of time alone as a kid, too.

**ANNA**

But you have twelve older brothers.

**HANS**

Yeah. But if they weren't humiliating me, they were ignoring me. It's not going to be like that when I have a family.

ANNA

Me neither! No one will ever be shut out.

HANS

Oh Anna, I could never shut you out.

(#14 – LOVE IS AN OPEN DOOR. When the music begins, some of the TOWNSPEOPLE quietly begin to pair off and dance.)

## Love Is an Open Door

ANNA: Okay, can I just say something crazy?

HANS: I love crazy.

1 **3** ANNA:

All my

5

life has been a se-ries of doors — in my face, and then

7 HANS: I was thinking the same thing, because like...

sud-den-ly I bump in - to you.

9 HANS:

I've been search - ing my whole life — to

10

find my own place, and may - be

(ANNA considers this.)

ANNA

Okay, Kristoff. You're hired. Let's go.

(#17 – **YOU'RE HIRED.** ANNA, KRISTOFF, and SVEN start walking.)

## You're Hired

**KRISTOFF:** So did you know your sister could do this?

**ANNA:** I didn't know anything.

**KRISTOFF:** You know, most people who disappear into the mountains want to be alone.

**ANNA:** Nobody wants to be alone. (A voice is heard as

OLAF enters.)

**OLAF:**

1 5

A

7

lit - tle bit of you, a lit - tle bit of me...

ANNA, KRISTOFF

(screaming, seeing OLAF)

AHHHHHHHHH!

OLAF

Okay. Let's start this thing over. Hi everyone, I'm Olaf, and I like warm hugs.

ANNA

Olaf?

OLAF

Yeah-huh.

**KRISTOFF**

Olaf?

**OLAF**

Like I said, yeah-huh.

*(SVEN begins to sniff OLAF.)*

And who's the funky-looking donkey?

**ANNA**

*(assuming Olaf is referring to SVEN)*

That's Sven.

**OLAF**

Ah-huh. And who's the reindeer?

*(Realizing who the funky-looking donkey is, KRISTOFF crosses his arms, offended.)*

**ANNA**

... Sven.

**OLAF**

Oh good. They're both Sven. Makes it easier for me.

*(to ANNA)*

And you're Anna.

**ANNA**

How do you know my name?

**OLAF**

Because you gave me my big... bouncy...

**ANNA**

Butt?

**OLAF**

That's right. Don't you remember?

**ANNA**

... I think I'm starting to.

**OLAF**

I'm a little like you. And a little like—

**ANNA**

Elsa.... Olaf, did Elsa build you?

OLAF

Yeah. Why?

ANNA

Do you know where she is?

OLAF

Yeah. Why?

ANNA

Do you think you could show us the way?

OLAF

Yeah. Why?

KRISTOFF

I'll tell you why. We need Elsa to bring back summer.

OLAF

Summer? Oh, I don't know why but I've always loved the idea of summer, and sun, and all things hot.

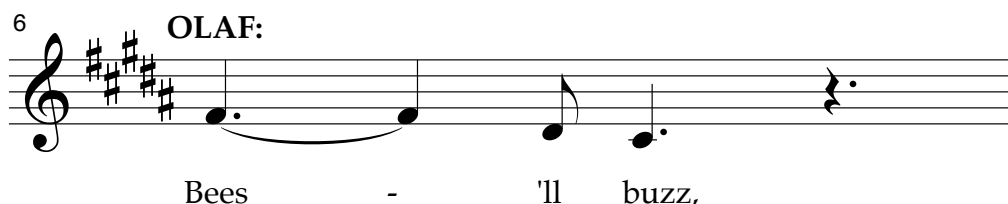
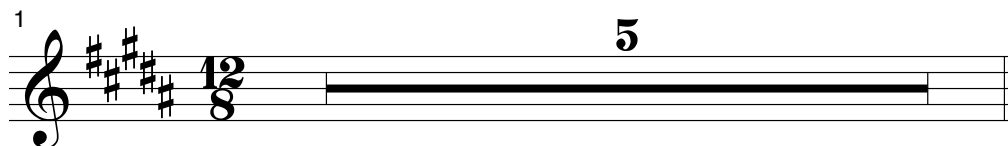
KRISTOFF

Really? I'm guessing you don't have much experience with heat.

(#18 – IN SUMMER.)

## In Summer

**OLAF:** Nope. But sometimes I like to close my eyes and imagine what it'd be like when summer does come!



Oh, darn!

**SVEN**

You too, Olaf. Just give us a minute.

**ANNA**

Oh, okay... One, two, three...

**OLAF**

*(OLAF, KRISTOFF, and SVEN exit.)*

Elsa...? It's me... Anna?!

**ANNA**

*(ELSA enters.)*

*(amazed)*  
Anna! I'm so happy to see you.

**ELSA**

Elsa. This place is incredible.

**ANNA**

Thank you. I never knew I could create something like this.

**ELSA**

I'm so sorry about what happened.

**ANNA**

No, you don't have to apologize. It wasn't your fault. You didn't know.

**ELSA**

Did Mother and Father know?

**ANNA**

Yes.

**ELSA**

So why didn't I know?

**ANNA**

For your own safety, Anna. I nearly killed you with my magic. You were six years old.

**ELSA**

Well, I'm not a child anymore, Elsa.

**ANNA**



**ELSA**

Neither am I, and my powers are much stronger than they were. You should probably go now, please.

*(ELSA turns to leave.)*

**ANNA**

I don't want to let you go.

**ELSA**

I'm just trying to protect you.

*(ANNA goes after her.)*

**ANNA**

You don't have to protect me. I'm not afraid.

**ELSA**

Anna, go back to Arendelle.

**ANNA**

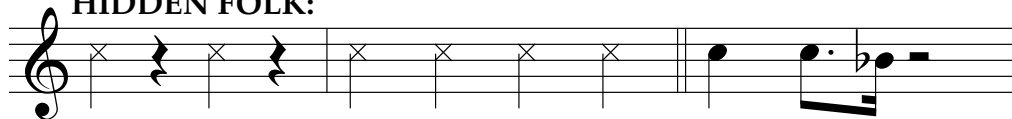
Um... you kind of set off an eternal winter in Arendelle. Actually, everywhere.

**ELSA**

Everywhere?

**(# 25 – FOR THE FIRST TIME IN FOREVER – REPRISE.**

*The SNOW CHORUS begins to shift in accordance with Elsa's fear.)*

37 **HIDDEN FOLK:**

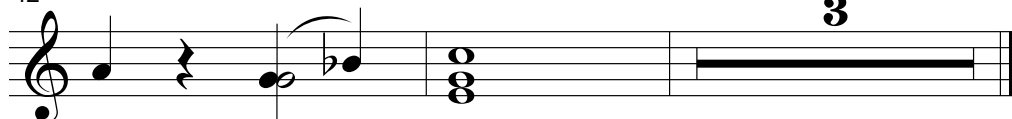
True! True! True, true, true, true! Love, true love.

40



Love, true \_\_\_ love. True love.

42



Love, true \_\_\_ love!

*(ANNA suddenly falls to the ground. #29 – AN ACT OF TRUE LOVE.)*

**KRISTOFF**

Anna! Help!

*(PABBIE and BULDA rush to ANNA's side. They examine her and see ANNA clutching her heart.)*

**PABBIE**

What is this? Another magic strike?! Why did you not tell me?

**KRISTOFF**

I tried!

**BULDA**

Anna, there is ice in your heart, put there by your sister.

**PABBIE**

If not removed quickly, to solid ice will you freeze, forever.

**KRISTOFF**

So remove it!

**BULDA**

If it was her head, we could. But the heart does not so easily let go of its pain.

**PABBIE**

Only an act of true love can thaw a frozen heart.

**ANNA**

An act of true love?

**KRISTOFF**

Anna, we've got to get you back to Hans.

**ANNA**

Hans.

**BULDA**

But you don't have much time!

**PABBIE**

Yes, move swiftly, Kristoff. Her life depends on it!

**KRISTOFF**

Thank you! Olaf, Sven, come on!

*(SVEN follows KRISTOFF.)*

**SVEN**

You got it!

**KRISTOFF**

Just stay out of sight, Olaf. No time to explain you.

**OLAF**

Okay!

*(KRISTOFF helps ANNA exit. OLAF and SVEN follow.)*

**BULDA**

Goodbye! Be careful!

**HIDDEN FOLK**

Goodbye! / Take care, Kristoff! / Be safe!

*(The HIDDEN FOLK exit in another direction.)*

**KRISTOFF**

Please, keep her warm.

*(HANS takes ANNA from KRISTOFF and leads her through the door into a castle chamber. KRISTOFF turns to go. SVEN appears and tries to block him.)*

**SVEN**

Not so fast, Kristoff.

**KRISTOFF**

What? She's safe inside the castle now.

**SVEN**

You can't leave!

**KRISTOFF**

Stop it, Sven.

**SVEN**

No. Why are you letting her go?

**KRISTOFF**

Because it's the right thing to do! I think. Now c'mon.

*(SVEN and KRISTOFF exit, leaving ANNA and HANS alone.)*

**ANNA**

Hans! Oh, Hans, Elsa froze my heart and only an act of true love can save me.

*(ANNA reaches out her hand for HANS. He takes it.)*

**HANS**

Oh, Anna.

*(lets her hand go)*

If only there was someone out there who loved you.

**ANNA**

But you said you did!

**HANS**

I lied. As thirteenth in line, I knew I'd have to marry into the throne. You were an obvious target, but who knew Elsa would make this so easy for me?

ANNA

What?

HANS

You two doomed each other, and made me the hero who just tried to help.

ANNA

No!

HANS

Now once I tell everyone we're married and get rid of Elsa, I am King Hans of Arendelle.

ANNA

You're no match for Elsa. You won't get away with this.

HANS

Oh, I already have.

*(HANS exits through the door, locking ANNA in.)*

ANNA

No. No. No. You can't leave me locked in this cold room to die! Please!  
*(sadly)*

I thought this was true love!

*(Suddenly, OLAF enters. #31 – ANNA AND OLAF.)*

OLAF

Anna?

ANNA

Olaf?! How did you get in here?

OLAF

I picked the lock with my carrot nose. Turns out, it's cute and useful!

ANNA

*(with so much gratitude)*

Oh, Olaf.

OLAF

So, where's Hans? What happened to your act of true love?

ANNA

I was wrong about him. It wasn't true love. I don't even know what love is.